



Client: (Hidden for Privacy)
 Project Name: (Hidden for Privacy)
 Project ID:
 Last Updated:

EXTERIOR FINISHES TAKEOFF

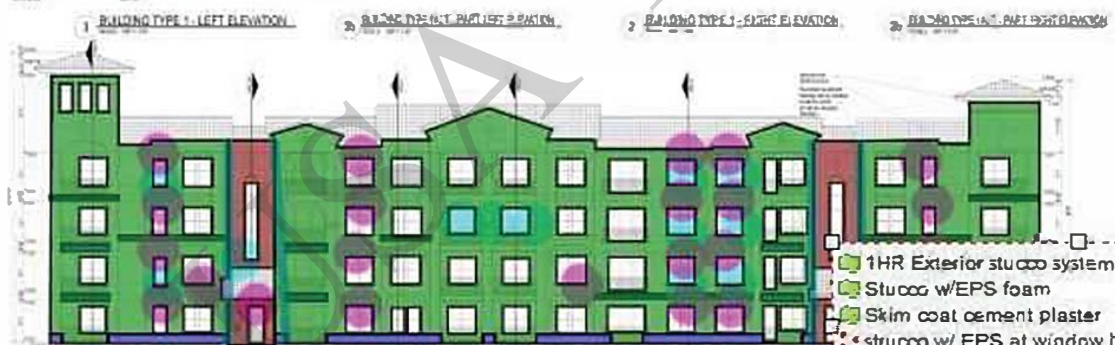
S#	DWG REF	DETAIL REF	CSI No	DESCRIPTION	QTY	UNIT	UNIT PRICE	TOTAL PRICE
1				General Requirements	1	LS		
				Subtotal				
				Exterior - Building #1				
2	A4.15			Scaffolding	29085	SF		
3				1HR Exterior stucco system incl. - Weather resistive barrier	25455	SF		
4				Stucco for 1HR Exterior wall type '1E' as: - Stucco system - Weather resistive barrier	10610	SF		
5	A4.15	A1.05		Skim coat cement plaster finish incl. - Weather resistive barrier	650	SF		
6				1HR Balcony/patio wall type '1C' as: -Fiber cement horizontal siding - Weather resistive barrier	1920	SF		
7				2HR Stucco system as: - Stucco system - Weather resistive barrier	10	SF		
8				1HR Exterior stucco system incl. - EPS foam - Weather resistive barrier	1585	SF		
9	A4.15	2/A5.12		Exterior stucco window head trim incl. - EPS foam - Weather resistive barrier	210	SF		
				Exterior stucco profiled window sill trim incl. - EPS foam - Weather resistive barrier	225	SF		
				Total				
				Exterior - Building #2				
11	A4.24			Scaffolding	24150	SF		
12				1HR Exterior stucco system incl. - Weather resistive barrier	18730	SF		
13				Stucco for 1HR Exterior wall type '1E' as: - Stucco system - Weather resistive barrier	9520	SF		
14	A4.24	A1.05		Skim coat cement plaster finish incl. - Weather resistive barrier	650	SF		
15				1HR Balcony/patio wall type '1C' as: -Fiber cement horizontal siding - Weather resistive barrier	250	SF		
16				1HR Exterior stucco system incl. - EPS foam - Weather resistive barrier	1150	SF		
17	A4.24	2/A5.12		Exterior stucco window head trim incl. - EPS foam - Weather resistive barrier	259	SF		
18				Exterior stucco profiled window sill trim incl. - EPS foam - Weather resistive barrier	225	SF		
				Total				
				Exterior - Building #3				
19	A4.34			Scaffolding	28000	SF		
20				Exterior stucco profiled window sill trim incl. - EPS foam - Weather resistive barrier	240	SF		
21				Stucco for 1HR Exterior wall type '1E' as: - Stucco system - Weather resistive barrier	10000	SF		



Client: (Hidden for Privacy)
 Project Name: (Hidden for Privacy)
 Project ID: (Hidden for Privacy)
 Last Updated:

EXTERIOR FINISHES TAKEOFF

S#	DWG REF	DETAIL REF	CSI No	DESCRIPTION	QTY	UNIT	UNIT PRICE	TOTAL PRICE
22	A4.34	A1.05		Skim coat cement plaster finish incl. - Weather resistive barrier	650	SF		
23				1HR Balcony/patio wall type '1C' as: -Fiber cement horizontal siding - Weather resistive barrier	260	SF		
24				2HR Stucco system as: - Stucco system - Weather resistive barrier	55	SF		
25				1HR Exterior stucco system incl. - Weather resistive barrier	18910	SF		
26	A4.34	2/A5.12		1HR Exterior stucco system incl. - EPS foam - Weather resistive barrier	1400	SF		
27				Exterior stucco window head trim incl. - EPS foam - Weather resistive barrier	250	SF		
				Total				
				Total				
				Detached Garage				
28	A9.01			Scaffolding	2005	SF		
29	A9.01			1HR Exterior stucco system incl. - Weather resistive barrier	1235	SF		
30				1HR Exterior stucco system incl. - EPS foam - Weather resistive barrier	300	SF		
31	A9.01			Exterior stucco window head trim incl. - EPS foam - Weather resistive barrier	45	SF		
				Total				
				Mail Kiosk				
32	A9.03			Scaffolding/Means and Method	1	LS		
33				Stucco for 1HR Exterior wall type '1E' as - Weather resistive barrier - Stucco system	400	SF		
34	A9.03			Exterior stucco trim incl. - EPS foam - Weather resistive barrier	25	SF		
				Total				
				TOTAL				



SYMBOL LEGEND - ELEVATIONS

[Symbol]	[Symbol]	[Symbol]	[Symbol]
[Symbol]	[Symbol]	[Symbol]	[Symbol]
[Symbol]	[Symbol]	[Symbol]	[Symbol]
[Symbol]	[Symbol]	[Symbol]	[Symbol]
[Symbol]	[Symbol]	[Symbol]	[Symbol]

ELEVATION NOTES

1. EXTERIOR FINISHES TO BE AS SHOWN UNLESS NOTED OTHERWISE.

2. ALL FINISHES TO BE APPLIED TO EXTERIOR SURFACES UNLESS NOTED OTHERWISE.

3. ALL FINISHES TO BE APPLIED TO INTERIOR SURFACES UNLESS NOTED OTHERWISE.

4. ALL FINISHES TO BE APPLIED TO ROOF SURFACES UNLESS NOTED OTHERWISE.

5. ALL FINISHES TO BE APPLIED TO FLOOR SURFACES UNLESS NOTED OTHERWISE.

6. ALL FINISHES TO BE APPLIED TO CEILING SURFACES UNLESS NOTED OTHERWISE.

7. ALL FINISHES TO BE APPLIED TO WALL SURFACES UNLESS NOTED OTHERWISE.

8. ALL FINISHES TO BE APPLIED TO DOOR SURFACES UNLESS NOTED OTHERWISE.

9. ALL FINISHES TO BE APPLIED TO WINDOW SURFACES UNLESS NOTED OTHERWISE.

10. ALL FINISHES TO BE APPLIED TO TRIM SURFACES UNLESS NOTED OTHERWISE.

COLOR LEGEND

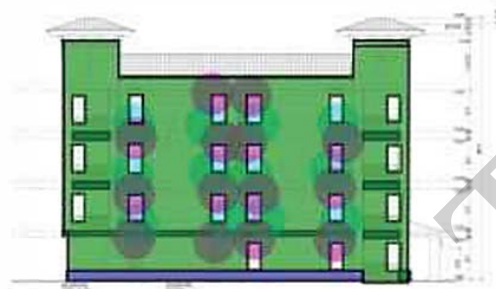
[Green]	1 HR Exterior stucco system
[Light Green]	Stucco w/ EPS foam
[Light Blue]	Skim coat cement plaster
[Pink]	stucco w/ EPS at window head trim
[Light Blue]	stucco w/ EPS foam window sill trim
[Red]	return in exterior wall (3245 SF)



[Green]	1 HR Exterior stucco system	22,209.2 SQ FT
[Light Green]	Stucco w/ EPS foam	1,584.3 SQ FT
[Light Blue]	Skim coat cement plaster	650.1 SQ FT
[Pink]	stucco w/ EPS at window head trim	68.0
[Light Blue]	stucco w/ EPS foam window sill trim	64.0
[Red]	return in exterior wall (3245 SF)	345.9 FT



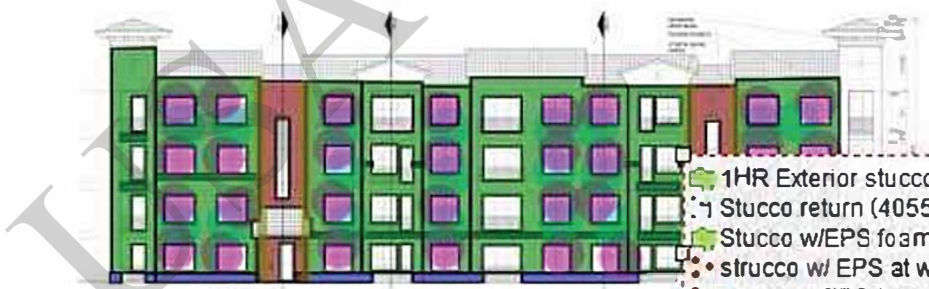
4 BUILDING TYPE 2 - REAR ELEVATION



3 BUILDING TYPE 3 - LEFT ELEVATION



2 BUILDING TYPE 3 - RIGHT ELEVATION



1 BUILDING TYPE 3 - FRONT ELEVATION

SYMBOL LEGEND - ELEVATIONS

[Symbol]	[Symbol]	[Symbol]	[Symbol]
[Symbol]	[Symbol]	[Symbol]	[Symbol]
[Symbol]	[Symbol]	[Symbol]	[Symbol]
[Symbol]	[Symbol]	[Symbol]	[Symbol]
[Symbol]	[Symbol]	[Symbol]	[Symbol]

ELEVATION NOTES

1. All elevations are shown in accordance with the requirements of the International Building Code (IBC) and the International Residential Code (IRC).

2. All elevations are shown in accordance with the requirements of the International Building Code (IBC) and the International Residential Code (IRC).

3. All elevations are shown in accordance with the requirements of the International Building Code (IBC) and the International Residential Code (IRC).

4. All elevations are shown in accordance with the requirements of the International Building Code (IBC) and the International Residential Code (IRC).

5. All elevations are shown in accordance with the requirements of the International Building Code (IBC) and the International Residential Code (IRC).

COLOR LEGEND

[Green]	1HR Exterior stucco system	14,675.1 SQ FT
[Blue]	Stucco return (4055 SF)	343.7 SQ FT
[Light Green]	Stucco w/EPS foam	1,149.4 SQ FT
[Purple]	stucco w/ EPS at window head trim	87.0
[Light Blue]	stucco w/EPS foam window sill trim	63.0
[Dark Green]	Skim coat cement plaster	649.5 SQ FT

USA TAKEOFFS
CONSTRUCTION ESTIMATING SERVICES

NUMBERS & PARTS

1. All quantities are in decimal format.

2. All quantities are in decimal format.

3. All quantities are in decimal format.

4. All quantities are in decimal format.

5. All quantities are in decimal format.





SYMBOL LEGEND - ELEVATIONS

[Symbol]	[Symbol]	[Symbol]	[Symbol]
[Symbol]	[Symbol]	[Symbol]	[Symbol]
[Symbol]	[Symbol]	[Symbol]	[Symbol]
[Symbol]	[Symbol]	[Symbol]	[Symbol]

ELEVATION NOTES

1. All exterior wall surfaces shall be finished with 1/2" thick Type S masonry units with a minimum compressive strength of 1500 psi. Mortar shall be Type S.

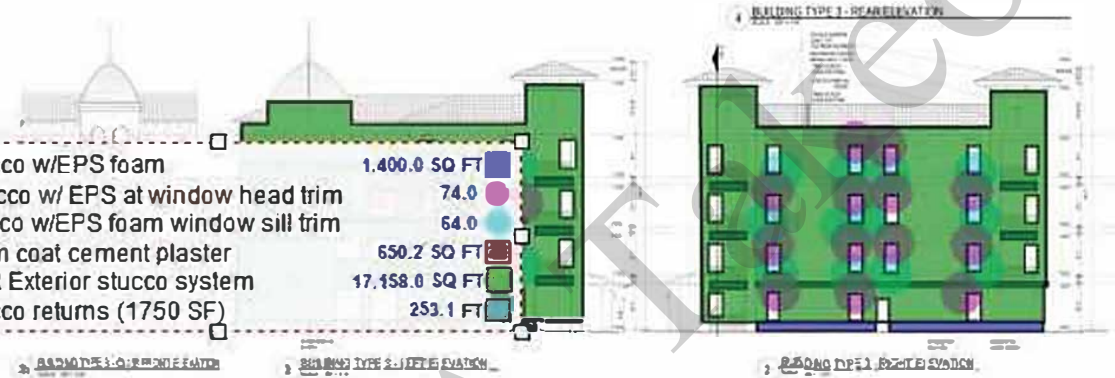
2. All exterior wall surfaces shall be finished with 1/2" thick Type S masonry units with a minimum compressive strength of 1500 psi. Mortar shall be Type S.

3. All exterior wall surfaces shall be finished with 1/2" thick Type S masonry units with a minimum compressive strength of 1500 psi. Mortar shall be Type S.

COLOR LEGEND

[Color]	[Color]	[Color]	[Color]
[Color]	[Color]	[Color]	[Color]
[Color]	[Color]	[Color]	[Color]
[Color]	[Color]	[Color]	[Color]

- Stucco w/ EPS foam 1,400.0 SQ FT
- stucco w/ EPS at window head trim 74.0
- stucco w/ EPS foam window sill trim 64.0
- Skim coat cement plaster 650.2 SQ FT
- 1HR Exterior stucco system 17,158.0 SQ FT
- Stucco returns (1750 SF) 253.1 SQ FT



110 IMPERIAL AVENUE, SUITE 100
 AUSTIN, TEXAS 78704
 (512) 426-1100
 www.usatakeoffs.com

USA TAKEOFFS
 CONSTRUCTION ESTIMATING SERVICES

12/14



A4.34